

**Product Description:** Hemp CBD Organic Gummy Bears 25mg/unit GUM, ISO-DIS

**Invoice Number:** 2025-514.1-2

**Lot Number:** GUM-28422-B1

**Manufacture Date:** Jan 08, 2025

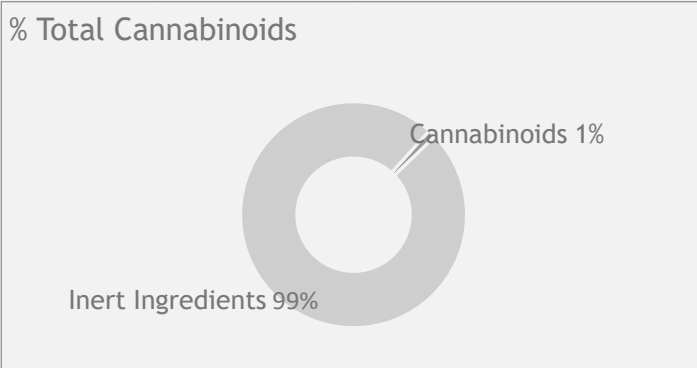
**Product Code:** GUM-25-ISO-DIS

**Date of Analysis:** Jan 28, 2025

**Best By Date:** Jan 28, 2027

**Cannabinoid Potency - Expected CBD: 25.00 mg/unit ± 10%**

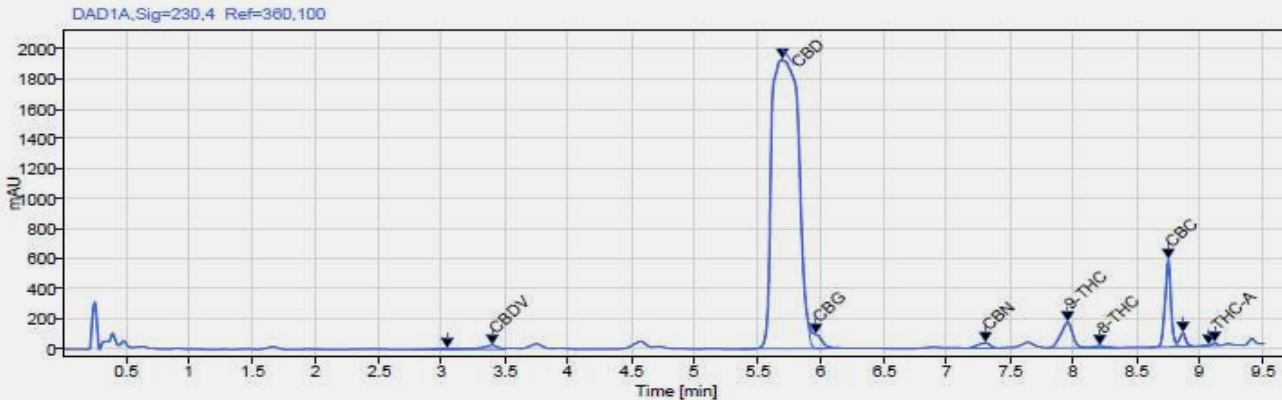
Unit Weight: 2602.8 mg



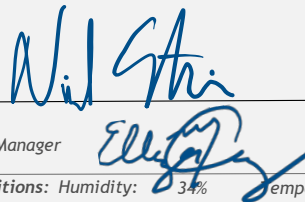
	mg/g	%	LOQ (mg/g)
<b>Total CBD:</b>	<b>29.51 mg/unit</b>	<b>2.951%</b>	0.01 mg/unit
CBD:	11.34 mg/g	1.134%	0.01 mg/g
CBDa:	<LOD	<LOD	0.01 mg/g
<b>d9-THC:</b>	<b>0.03 mg/g</b>	<b>0.003%</b>	0.01 mg/g
CBC:	0.10 mg/g	0.010%	0.01 mg/g
CBG:	0.06 mg/g	0.006%	0.01 mg/g
CBGa:	<LOD	<LOD	0.01 mg/g
CBN:	0.01 mg/g	0.001%	0.01 mg/g
CBDV:	0.02 mg/g	0.002%	0.01 mg/g
d8-THC:	0.01 mg/g	0.001%	0.01 mg/g
THCa:	0.01 mg/g	0.001%	0.01 mg/g
<b>Density:</b>	N/A (kg/m3)	<b>Specific Gravity:</b>	N/A

\*Total d9-THC and CBD are calculated taking into account the loss of a carboxyl group during decarboxylation. The formulas are as follows : d9-THC = d9THC + (THCa \*(0.877))    CBD = CBD + (CBDa \*(0.877))  
\*\*Any compounds with results listed as "<LOD" were below the Limit of Detection and were not detected.  
\*\*\*LOQ is the limit of quantitation for any given analyte.

**Chromatogram**



Prepared By: N. Stasi  
Operations Manager  
Jan 28, 2025



Reviewed By: E. Casey  
Formulation and R&D Manager  
Jan 28, 2025



Analyzed via HPLC Under These Conditions: Humidity: 34% temperature: 73.3 °F

ISO 9001:2015 Certificate Number: US4293

Certificate of Analysis test results are based only on the analysis of the product listed in the "Product Description" of this form. Hammer Enterprises, LLC, makes no claims as to the efficacy, safety, or other risks associated with any detected or non-detected compounds reported herein. All analyses conducted at Hammer Enterprises, LLC, is performed on well-maintained, quality instruments utilizing Good Laboratory Practices and validated methodology. This Certificate may not be reproduced except in full, without the written approval of Hammer Enterprises, LLC. **DISCLAIMER:** When reviewing certificate ensure watermark is complete and intact. Watermark will present as repeating HE logos diagonally across the entire page. The authenticity of this document is not guaranteed if there is evident modification, blocking, or alterations of the watermark.